

# iCheck: A package checking data quality of Illumina expression data

Weiliang Qiu<sup>‡\*</sup>, Brandon Guo<sup>‡†</sup>, Christopher Anderson<sup>‡‡</sup>, Barbara Klanderma<sup>‡§</sup>,  
Vincent Carey<sup>‡¶</sup>, Benjamin Raby<sup>‡||</sup>

October 14, 2015

<sup>‡</sup>Channing Division of Network Medicine  
Brigham and Women's Hospital / Harvard Medical School  
181 Longwood Avenue, Boston, MA, 02115, USA

## Contents

<b>1</b>	<b>Overview of iCheck</b>	<b>2</b>
<b>2</b>	<b>Exclude failed arrays</b>	<b>4</b>
<b>3</b>	<b>Check QC probes</b>	<b>4</b>
<b>4</b>	<b>Check squared correlations among genetic control (GC) arrays</b>	<b>6</b>
<b>5</b>	<b>Exclude GC arrays</b>	<b>8</b>
<b>6</b>	<b>Check squared correlations among replicated arrays</b>	<b>9</b>
<b>7</b>	<b>Obtain plot of quantiles across arrays</b>	<b>10</b>
<b>8</b>	<b>Exclude gene probes with outlying expression levels</b>	<b>11</b>
<b>9</b>	<b>Obtain plot of the ratio (<math>p_{95}/p_{05}</math>) of 95-th percentile to 5-th percentile across arrays</b>	<b>12</b>
<b>10</b>	<b>Exclude arrays with <math>p_{95}/p_{05} \leq 6</math></b>	<b>13</b>
<b>11</b>	<b>Obtain Plot of principal components</b>	<b>14</b>
<b>12</b>	<b>Perform background correction, data transformation and normalization</b>	<b>15</b>

---

\*stwxq (at) channing.harvard.edu

†brandowonder (at) gmail.com

‡christopheranderson84 (a) gmail.com

§BKLANDERMAN (at) partners.org

¶stvjc (at) channing.harvard.edu

||rebar (at) channing.harvard.edu

<b>13 Obtain Plot of principal components for pre-processed data</b>	<b>15</b>
<b>14 Incorporate phenotype data</b>	<b>17</b>
<b>15 Data analysis</b>	<b>17</b>
15.1 lmFitWrapper and lmFitPaired . . . . .	17
15.2 glmWrapper . . . . .	19
15.3 lchrWrapper . . . . .	20
<b>16 Session Info</b>	<b>21</b>

## 1 Overview of iCheck

The `iCheck` package provides QC pipeline and data analysis tools for high-dimensional Illumina mRNA expression data. It provides several visualization tools to help identify gene probes with outlying expression levels, arrays with low quality, batches caused technical factors, batches caused by biological factors, and gender mis-match checking, etc.

We first generate a simulated data set to illustrate the usage of `iCheck` functions.

```
> library(iCheck)
> if (!interactive())
+ {
+   options(rgl.useNULL = TRUE)
+ }
> # generate sample probe data
> set.seed(1234567)
> es.sim = genSimData.BayesNormal(nCpGs = 110,
+   nCases = 20, nControls = 20,
+   mu.n = -2, mu.c = 2,
+   d0 = 20, s02 = 0.64, s02.c = 1.5, testPara = "var",
+   outlierFlag = FALSE,
+   eps = 1.0e-3, applicer = lapply)
> print(es.sim)
```

```
ExpressionSet (storageMode: lockedEnvironment)
assayData: 110 features, 40 samples
  element names: exprs
protocolData: none
phenoData
  sampleNames: subj1 subj2 ... subj40 (40 total)
  varLabels: arrayID memSubj
  varMetadata: labelDescription
featureData
  featureNames: probe1 probe2 ... probe110 (110 total)
  fvarLabels: probe gene chr memGenes
  fvarMetadata: labelDescription
experimentData: use 'experimentData(object)'
Annotation:
```

```

> # create replicates
> dat=exprs(es.sim)
> dat[,1]=dat[,2]
> dat[,3]=dat[,4]
> exprs(es.sim)=dat
> es.sim$arrayID=as.character(es.sim$arrayID)
> es.sim$arrayID[1]=es.sim$arrayID[2]
> es.sim$arrayID[3]=es.sim$arrayID[4]
> es.sim$arrayID[5:8]="Hela"
> # since simulated data set does not have 'Pass_Fail',
> # 'Tissue_Descr', 'Batch_Run_Date', 'Chip_Barcode',
> # 'Chip_Address', 'Hybridization_Name', 'Subject_ID', 'gender'
> # we generate them now to illustrate the R functions in the package
>
> es.sim$Hybridization_Name = paste(es.sim$arrayID, 1:ncol(es.sim), sep="_")
> # assume the first 4 arrays are genetic control samples
> es.sim$Subject_ID = es.sim$arrayID
> es.sim$Pass_Fail = rep("pass", ncol(es.sim))
> # produce genetic control GC samples
> es.sim$Tissue_Descr=rep("CD4", ncol(es.sim))
> # assume the first 4 arrays are genetic control samples
> es.sim$Tissue_Descr[5:8]="Human HeLa Cell"
> es.sim$Batch_Run_Date = 1:ncol(es.sim)
> es.sim$Chip_Barcode = 1:ncol(es.sim)
> es.sim$Chip_Address = 1:ncol(es.sim)
> es.sim$gender=rep(1, ncol(es.sim))
> set.seed(12345)
> pos=sample(x=1:ncol(es.sim), size=ceiling(ncol(es.sim)/2), replace=FALSE)
> es.sim$gender[pos]=0
> # generate sample probe data
> es.raw = es.sim[-c(1:10),]
> print(es.raw)

```

```

ExpressionSet (storageMode: lockedEnvironment)
assayData: 100 features, 40 samples
  element names: exprs
protocolData: none
phenoData
  sampleNames: subj1 subj2 ... subj40 (40 total)
  varLabels: arrayID memSubj ... gender (10 total)
  varMetadata: labelDescription
featureData
  featureNames: probe11 probe12 ... probe110 (100 total)
  fvarLabels: probe gene chr memGenes
  fvarMetadata: labelDescription
experimentData: use 'experimentData(object)'
Annotation:

```

```

> # generate QC probe data
> es.QC = es.sim[c(1:10),]

```

```

> # since simulated data set does not have 'Reporter_Group_Name'
> # we created it now to illustrate the usage of 'plotQCCurves'.
> fDat=fData(es.QC)
> fDat$Reporter_Group_Name=rep("biotin", 10)
> fDat$Reporter_Group_Name[3:4]="cy3_hyb"
> fDat$Reporter_Group_Name[5:6]="housekeeping"
> fDat$Reporter_Group_Name[7:8]="low_stringency_hyb"
> fData(es.QC)=fDat
> print(es.QC)

```

```

ExpressionSet (storageMode: lockedEnvironment)
assayData: 10 features, 40 samples
  element names: exprs
protocolData: none
phenoData
  sampleNames: subj1 subj2 ... subj40 (40 total)
  varLabels: arrayID memSubj ... gender (10 total)
  varMetadata: labelDescription
featureData
  featureNames: probe1 probe2 ... probe10 (10 total)
  fvarLabels: probe gene ... Reporter_Group_Name (5 total)
  fvarMetadata: labelDescription
experimentData: use 'experimentData(object)'
Annotation:
>

```

## 2 Exclude failed arrays

The meta data variable `Pass_Fail` indicates if an array is technically failed. We first should exclude these arrays.

We first check the values of the variable `Pass_Fail`:

```
> print(table(es.raw$Pass_Fail, useNA="ifany"))
```

```
pass
  40
```

If there exist failed arrays, then we exclude them:

```

> pos<-which(es.raw$Pass_Fail != "pass")
> if(length(pos))
+ {
+   es.raw<-es.raw[, -pos]
+   es.QC<-es.QC[, -pos]
+ }

```

## 3 Check QC probes

The function `plotQCCurves` shows plot of quantiles across arrays for each type of QC probes. We expect the trajectories of quantiles across arrays are horizontal lines.

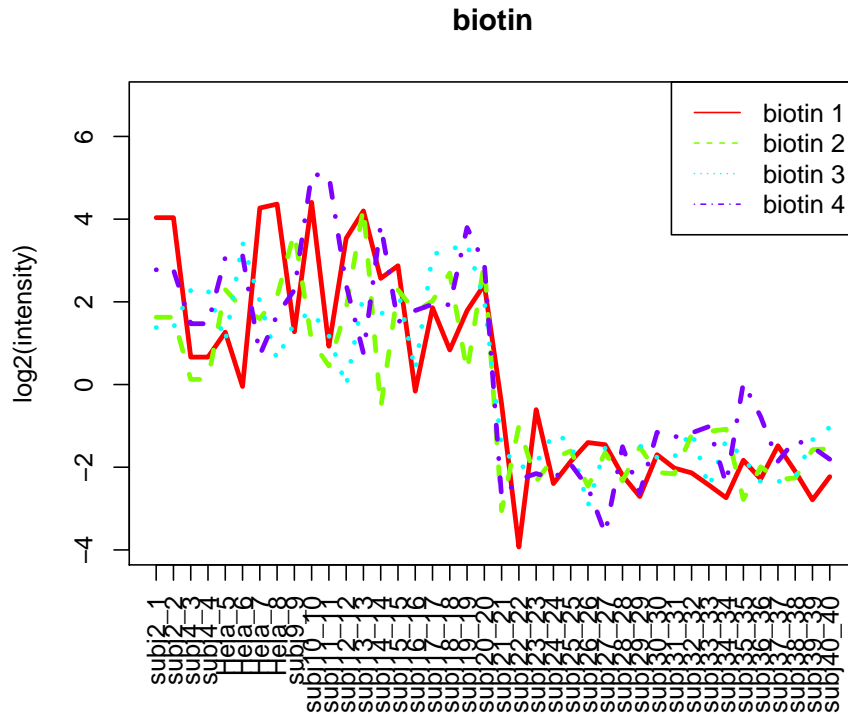
To get a better view, the arrays will be sorted based on variables specified in the function argument `varSort`.

```
> plotQCCurves(  
+   esQC=es.QC,  
+   probes = c("biotin"), #"cy3_hyb", "housekeeping"),  
+   #"low_stringency_hyb"),  
+   labelVariable = "subjID",  
+   hybName = "Hybridization_Name",  
+   reporterGroupName = "Reporter_Group_Name",  
+   requireLog2 = FALSE,  
+   projectName = "test",  
+   plotOutPutFlag = FALSE,  
+   cex = 1,  
+   ylim = NULL,  
+   xlab = "",  
+   ylab = "log2(intensity)",  
+   lwd = 3,  
+   mar = c(10, 4, 4, 2) + 0.1,  
+   las = 2,  
+   cex.axis = 1,  
+   sortFlag = TRUE,  
+   varSort = c("Batch_Run_Date", "Chip_Barcode", "Chip_Address"),  
+   timeFormat = c("%m/%d/%Y", NA, NA)  
+ )
```

```
probes>>  
[1] "biotin"
```

```
***** k= 1 *****
```

```
QC probe= biotin
```



#### 4 Check squared correlations among genetic control (GC) arrays

Next, we draw heatmap of the squared correlations among GC arrays. We expect the squared correlations among GC arrays are high ( $> 0.90$ ).

The function argument `labelVariable` indicates which meta variable will be used to label the arrays in the heatmap.

If we draw heatmap for replicated arrays, we can set the function arguments `sortFlag=TRUE`,

```
varSort=c("Subject_ID", "Hybridization_Name",
          "Batch_Run_Date", "Chip_Barcode", "Chip_Address")
and
timeFormat=c(NA, NA, "%m/%d/%Y", NA, NA)
```

so that arrays from the same subjects will be grouped together in the heatmap.

Note that although the meta variable `Batch_Run_Date` records time, it is vector of string character in R. The function `R2PlotFunc` will automatically

convert it to time variable if we set the value of the argument `timeFormat` corresponding to the variable `Batch_Run_Date` as a time format like `"%m/%d/%Y"`. Details about the time format, please see the R function `strptime`.

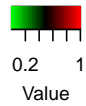
The followings show example R code to draw heatmap of GC arrays.

```
> R2PlotFunc(  
+   es=es.raw,  
+   hybName = "Hybridization_Name",  
+   arrayType = "GC",  
+   GCid = c("128115", "Hela", "Brain"),  
+   probs = seq(0, 1, 0.25),  
+   col = gplots::greenred(75),  
+   labelVariable = "subjID",  
+   outFileName = "test_R2_raw.pdf",  
+   title = "Raw Data R^2 Plot",  
+   requireLog2 = FALSE,  
+   plotOutPutFlag = FALSE,  
+   las = 2,  
+   keysize = 1,  
+   margins = c(10, 10),  
+   sortFlag = TRUE,  
+   varSort=c("Batch_Run_Date", "Chip_Barcode", "Chip_Address"),  
+   timeFormat=c("%m/%d/%Y", NA, NA)  
+ )
```

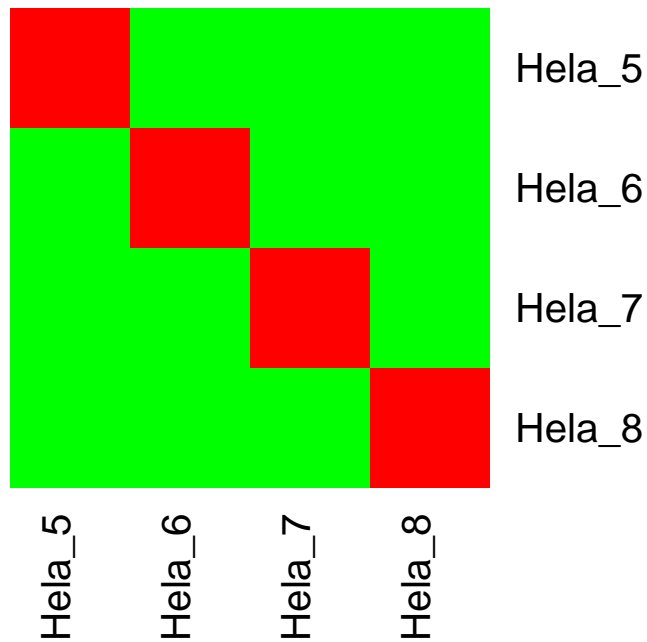
quantile of R^2>>

	0%	25%	50%	75%	100%
	4.807015e-06	1.015917e-03	1.675295e-03	4.155686e-03	6.798879e-03

Color Key



## Raw Data R<sup>2</sup> Plot



## 5 Exclude GC arrays

We next exclude GC arrays and will focus on sample arrays to check data quality.

```
> print(table(es.raw$Tissue_Descr, useNA="ifany"))
```

```
      CD4 Human HeLa Cell  
36      4
```

```
> # for different data sets, the label for GC arrays might  
> # be different.  
> pos.del<-which(es.raw$Tissue_Descr == "Human HeLa Cell")  
> cat("No. of GC arrays=", length(pos.del), "\n")
```

```
No. of GC arrays= 4
```

```
> if(length(pos.del))  
+ {  
+   es.raw<-es.raw[,-pos.del]  
+   es.QC<-es.QC[,-pos.del]
```



```
+ print(dims(es.raw))
+ print(dims(es.QC))
+ }
```

```
      exprs
Features 100
Samples  36
      exprs
Features  10
Samples  36
```

## 6 Check squared correlations among replicated arrays

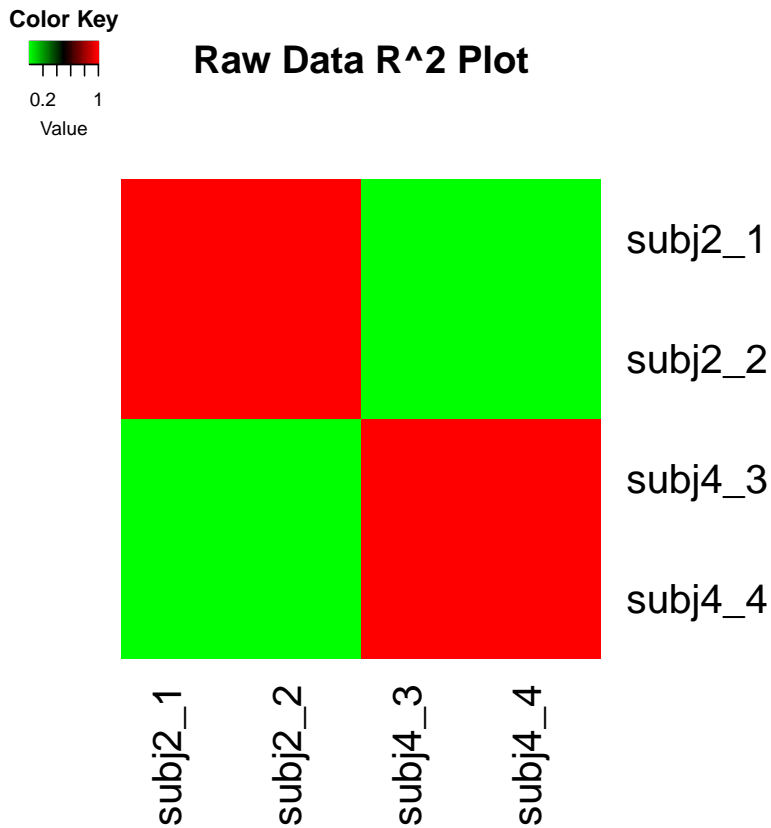
Check squared correlations among replicated arrays (excluding GC arrays). We expect within subject correlations will be high.

```
> R2PlotFunc(
+   es=es.raw,
+   arrayType = c("replicates"),
+   GCid = c("128115", "Hela", "Brain"),
+   probs = seq(0, 1, 0.25),
+   col = gplots::greenred(75),
+   labelVariable = "subjID",
+   outFileName = "test_R2_raw.pdf",
+   title = "Raw Data R^2 Plot",
+   requireLog2 = FALSE,
+   plotOutPutFlag = FALSE,
+   las = 2,
+   keysize = 1,
+   margins = c(10, 10),
+   sortFlag = TRUE,
+   varSort=c("Subject_ID", "Hybridization_Name", "Batch_Run_Date", "Chip_Barcode",
+   timeFormat=c(NA, NA, "%m/%d/%Y", NA, NA)
+ )
```

```
quantile of R^2>>
      0%      25%      50%      75%     100%
0.007151179 0.007151179 0.007151179 0.751787795 1.000000000
```

```
quantile of within-replicate R^2>>
      0% 25% 50% 75% 100%
      1  1  1  1  1
```

```
>
```



## 7 Obtain plot of quantiles across arrays

We next draw plot of quantiles across sample arrays. We expect the trajectories of quantiles be horizontal. However, for real data, some patterns of the trajectories might appear indicating the existence of some batch effects.

Some times, the quantile plots can show that some probes have some outlying expression levels. In this case, we can delete those gene probes.

Note that by default, the function argument `requireLog2 = TRUE`. Hence, we need to take log2 transformation to identify which gene probes containing outlying expression levels.

By default, we will sort the arrays by the ascending order of the median absolute deviation (MAD) to have a better view of the trajectories of quantiles.

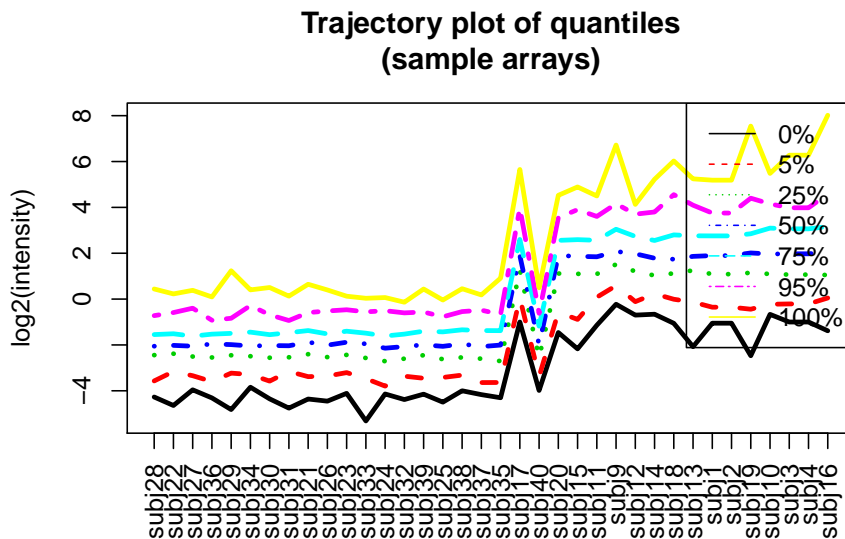
```
> quantilePlot(
+   dat=exprs(es.raw),
+   fileName,
+   probs = c(0, 0.05, 0.25, 0.5, 0.75, 0.95, 1),
+   plotOutPutFlag = FALSE,
+   requireLog2 = FALSE,
```

```

+      sortFlag = TRUE,
+      cex = 1,
+      ylim = NULL,
+      xlab = "",
+      ylab = "log2(intensity)",
+      lwd = 3,
+      main = "Trajectory plot of quantiles\n(sample arrays)",
+      mar = c(15, 4, 4, 2) + 0.1,
+      las = 2,
+      cex.axis = 1
+    )

```

\*\*\*\*\* Arrays were sorted by MAD (median absolute deviation)!



## 8 Exclude gene probes with outlying expression levels

if quantile plots show some outlying expression levels, we can use the following R code to identify the gene probes with outlying expression levels.

```

> # note we need to take log2 transformation
> # if requireLog2 = TRUE.
> requireLog2 = FALSE
> if(requireLog2)
+ {
+   minVec<-apply(log2(exprs(es.raw)), 1, min, na.rm=TRUE)
+   # suppose the cutoff is 0.5
+   print(sum(minVec< 0.5))
+   pos.del<-which(minVec<0.5)
+
+   cat("Number of gene probes with outlying expression levels>>",
+       length(pos.del), "\n")
+   if(length(pos.del))
+   {
+     es.raw<-es.raw[-pos.del,]
+   }
+ }
>

```

## 9 Obtain plot of the ratio ( $p_{95}/p_{05}$ ) of 95-th percentile to 5-th percentile across arrays

We next draw the plot of the ratio of  $p_{95}$  over  $p_{05}$  across arrays, where  $p_{95}$  ( $p_{05}$ ) is the 95-th (5-th) percentile of a array. If an array with the ratio  $p_{95}/p_{05}$  is less than 6, then we regard this array as a bad array and should delete it before further analysis.

Note that we should set `requireLog2 = FALSE`.

```

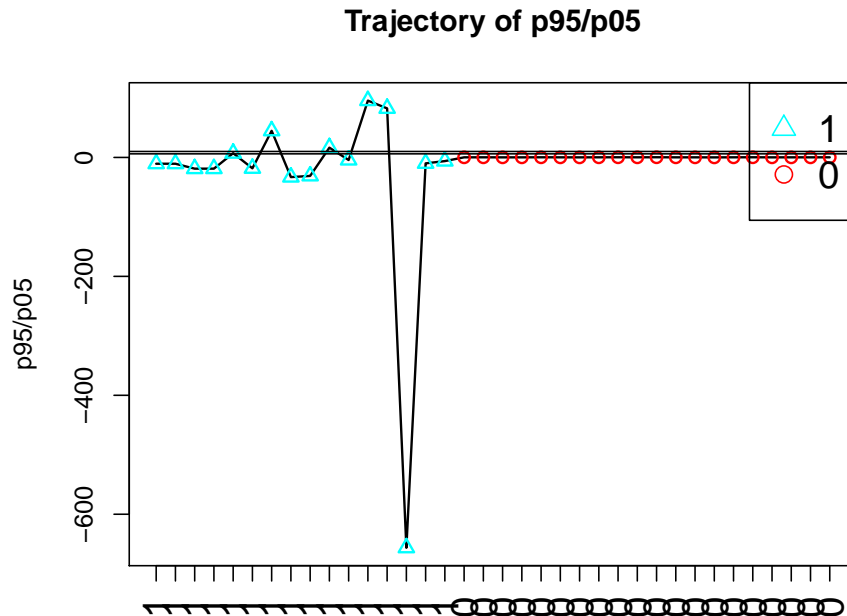
>   plotSamplep95p05(
+     es=es.raw,
+     labelVariable = "memSubj",
+     requireLog2 = FALSE,
+     projectName = "test",
+     plotOutPutFlag = FALSE,
+     cex = 1,
+     ylim = NULL,
+     xlab = "",
+     ylab = "",
+     lwd = 1.5,
+     mar = c(10, 4, 4, 2) + 0.1,
+     las = 2,
+     cex.axis=1.5,
+     title = "Trajectory of p95/p05",
+     cex.legend = 1.5,
+     cex.lab = 1.5,
+     legendPosition = "topright",
+     cut1 = 10,
+     cut2 = 6,
+     sortFlag = TRUE,

```

```

+     varSort = c("Batch_Run_Date", "Chip_Barcode", "Chip_Address"),
+     timeFormat = c("%m/%d/%Y", NA, NA),
+     verbose = FALSE)

```



## 10 Exclude arrays with $p_{95}/p_{05} \leq 6$

If there exist arrays with  $p_{95}/p_{05} < 6$ , we then need to exclude these arrays from further data analysis. The followings are example R code:

```

> p95<-quantile(exprs(es.raw), prob=0.95)
> p05<-quantile(exprs(es.raw), prob=0.05)
> r<-p95/p05
> pos.del<-which(r<6)
> print(pos.del)

```

95%

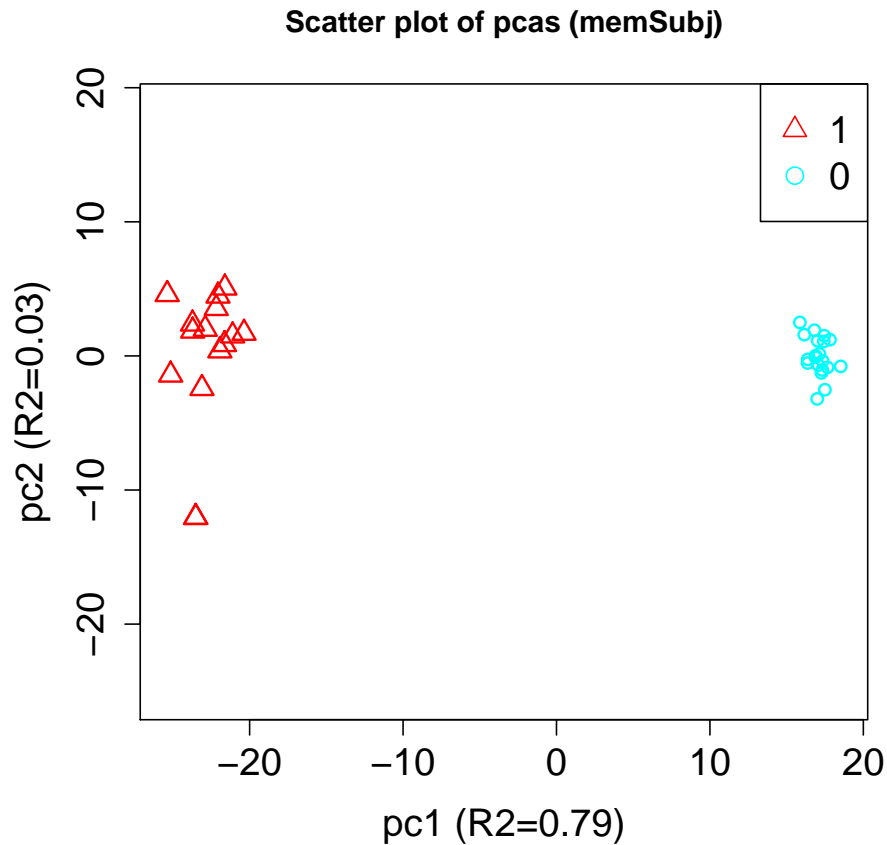
1

```

> if(length(pos.del))
+ {

```





## 12 Perform background correction, data transformation and normalization

```
> tt <- es.raw
> es.q <- lumiN(tt, method="quantile")
```

Perform quantile normalization ...

## 13 Obtain Plot of principal components for pre-processed data

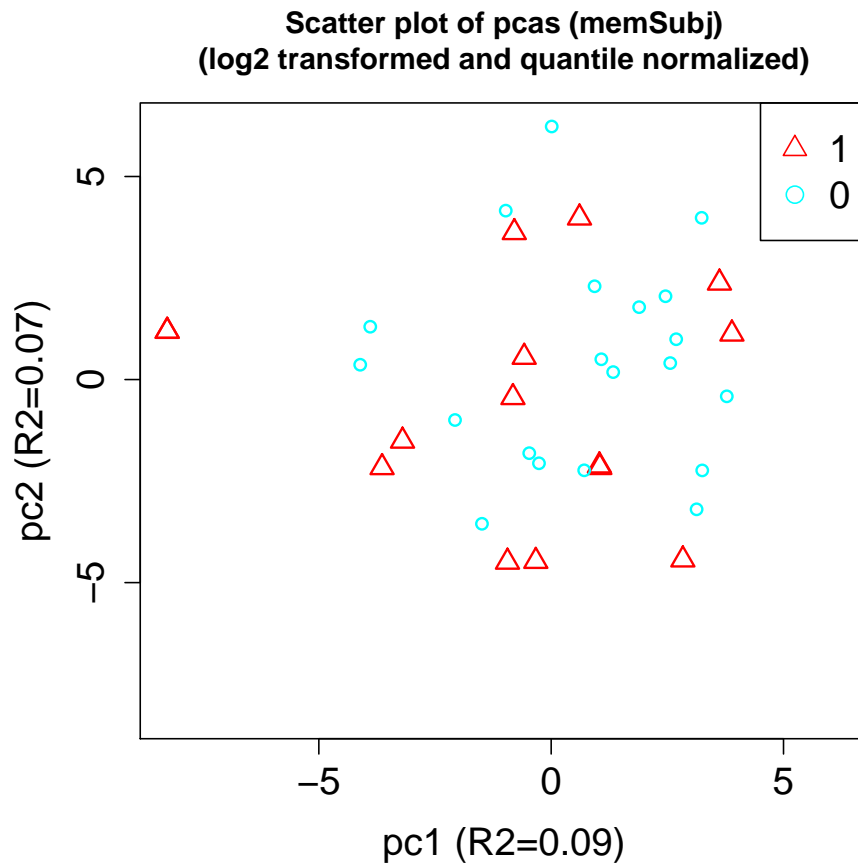
After pre-processing data, we do principal component analysis again.

Note that we should set `requireLog2 = FALSE`.

```
> pcaObj <- getPCAFunc(es=es.q,
+                       labelVariable = "subjID",
+                       requireLog2 = FALSE,
+                       corFlag = FALSE)
```

```
+  
+ )  
> pca2DPlot(pcaObj=pcaObj,  
+          plot.dim = c(1,2),  
+          labelVariable = "memSubj",  
+          outFileNames = "test_pca_raw.pdf",  
+          title = "Scatter plot of pcas (memSubj)\n(log2 transformed and quantile n",  
+          plotOutputFlag = FALSE,  
+          mar = c(5, 4, 4, 2) + 0.1,  
+          lwd = 1.5,  
+          equalRange = TRUE,  
+          xlab = NULL,  
+          ylab = NULL,  
+          xlim = NULL,  
+          ylim = NULL,  
+          cex.legend = 1.5,  
+          cex = 1.5,  
+          cex.lab = 1.5,  
+          cex.axis = 1.5,  
+          legendPosition = "topright"  
+ )  
>
```





## 14 Incorporate phenotype data

In addition meta data, we usually have phenotype data to describe subjects. We can now add them in.

## 15 Data analysis

### 15.1 lmFitWrapper and lmFitPaired

iCheck provide 2 limma wrapper functions `lmFitPaired` (for paired data) and `lmFitWrapper` (for unpaired data).

Note that the function argument `pos.var.interest = 1` requests the results (test statistic and p-value) for the first covariate will be print out.

If `pos.var.interest = 0`, then the results (test statistic and p-value) for the intercept will be print out.

The outcome variable must be gene probes. Can not be phenotype variables.

```
> res.limma=lmFitWrapper(
+   es=es.q,
```

```
+ formula=~as.factor(memSubj),
+ pos.var.interest = 1,
+ pvalAdjMethod="fdr",
+ alpha=0.05,
+ probeID.var="probe",
+ gene.var="gene",
+ chr.var="chr",
+ verbose=TRUE)
```

```
dim(dat)>>
[1] 100 35
```

Running lmFit...

Running eBayes...

Preparing output...

	probeIDs	geneSymbols	chr	stats	pval	p.adj	pos
1	probe29	gene29	1	-3.376879	0.001401733	0.1005857	19
2	probe16	gene16	1	3.254099	0.002011714	0.1005857	6
3	probe92	gene92	1	2.688895	0.009634725	0.3211575	82
4	probe59	gene59	1	-2.210193	0.031558408	0.4968483	49
5	probe32	gene32	1	2.181275	0.033750422	0.4968483	22
6	probe17	gene17	1	-2.143605	0.036806038	0.4968483	7
7	probe103	gene103	1	-2.117636	0.039051322	0.4968483	93
8	probe35	gene35	1	-2.109845	0.039747866	0.4968483	25
9	probe54	gene54	1	1.712229	0.092867773	0.8375408	44
10	probe74	gene74	1	-1.703176	0.094560774	0.8375408	64
11	probe40	gene40	1	1.638282	0.107456092	0.8375408	30
12	probe61	gene61	1	-1.604613	0.114691882	0.8375408	51
13	probe12	gene12	1	1.527377	0.132783363	0.8375408	2
14	probe56	gene56	1	-1.521438	0.134263881	0.8375408	46
15	probe90	gene90	1	-1.445861	0.154271925	0.8375408	80
16	probe79	gene79	1	-1.406303	0.165637004	0.8375408	69
17	probe89	gene89	1	-1.367624	0.177366059	0.8375408	79
18	probe38	gene38	1	1.360555	0.179576911	0.8375408	28
19	probe96	gene96	1	-1.351534	0.182428796	0.8375408	86
20	probe23	gene23	1	1.347172	0.183820114	0.8375408	13

pvalue quantiles for intercept and covariates>>

```
(Intercept) as.factor(memSubj)1
min 0.0002637651 0.001401733
25% 0.0356690890 0.242102862
median 0.1922335675 0.455084256
75% 0.4874162700 0.780677827
max 0.9978539142 0.998200667
```

formula>>

```
~as.factor(memSubj)
```

covariate of interest is as.factor(memSubj)

Number of tests= 100

```

Number of arrays= 35
Number of significant tests (raw p-value < 0.05 )= 8
Number of significant tests after p-value adjustments= 0

```

```

*****
No genes are differentially expressed!

```

```
>
```

## 15.2 glmWrapper

outcome variable can be phenotype variables. The function argument `family` indicates if logistic regression (`family=binomial`) used or general linear regression (`family=gaussian`) used.

```

> res.glm=glmWrapper(
+   es=es.q,
+   formula = xi~as.factor(memSubj),
+   pos.var.interest = 1,
+   family=gaussian,
+   logit=FALSE,
+   pvalAdjMethod="fdr",
+   alpha = 0.05,
+   probeID.var = "probe",
+   gene.var = "gene",
+   chr.var = "chr",
+   applier=lapply,
+   verbose=TRUE
+ )

```

	probeIDs	geneSymbols	chr	stats	coef	pval	p.adj	pos
1	probe16	gene16	1	3.305320	1.0593407	0.002293003	0.1763387	6
2	probe29	gene29	1	-3.142649	-1.3263843	0.003526774	0.1763387	19
3	probe92	gene92	1	2.508446	1.0489929	0.017219384	0.5739795	82
4	probe59	gene59	1	-2.238212	-0.7231024	0.032072229	0.6917895	49
5	probe35	gene35	1	-2.173225	-0.6718451	0.037042472	0.6917895	25
6	probe103	gene103	1	-2.121164	-0.7059218	0.041507370	0.6917895	93
7	probe17	gene17	1	-2.029732	-0.8040525	0.050510402	0.7215772	7
8	probe32	gene32	1	1.915186	1.0631079	0.064169227	0.8021153	22
9	probe74	gene74	1	-1.786253	-0.5282879	0.083249917	0.8072836	64
10	probe61	gene61	1	-1.725751	-0.4815208	0.093746106	0.8072836	51
11	probe54	gene54	1	1.633937	0.6301915	0.111777893	0.8072836	44
12	probe40	gene40	1	1.609611	0.5661679	0.117008899	0.8072836	30
13	probe90	gene90	1	-1.605115	-0.4182303	0.117997257	0.8072836	80
14	probe38	gene38	1	1.542007	0.3851935	0.132607854	0.8072836	28
15	probe56	gene56	1	-1.464652	-0.5487800	0.152478453	0.8072836	46
16	probe99	gene99	1	1.405098	0.3951053	0.169336626	0.8072836	89
17	probe108	gene108	1	-1.380558	-0.3907145	0.176695014	0.8072836	98
18	probe79	gene79	1	-1.339224	-0.5201586	0.189649429	0.8072836	69
19	probe12	gene12	1	1.333659	0.7656150	0.191448222	0.8072836	2

```
20 probe44      gene44    1 1.304127 0.3796869 0.201213900 0.8072836 34
```

```
pvalue quantiles for intercept and covariates>>
      pval.(Intercept) pval.as.factor(memSubj)1
min      0.0006238292      0.002293003
25%      0.0245832240      0.237742030
median   0.1952130722      0.444338213
75%      0.5048805444      0.784209263
max      0.9980082033      0.998167350
```

```
formula>>
```

```
xi ~ as.factor(memSubj)
```

```
covariate of interest is as.factor(memSubj)
```

```
Number of tests= 100
```

```
Number of arrays= 35
```

```
Number of significant tests (raw p-value < 0.05 )= 6
```

```
Number of significant tests after p-value adjustments= 0
```

```
*****
```

```
No genes are differentially expressed!
```

```
>
```

### 15.3 lkhrWrapper

Likelihood ratio test wrapper. Compare 2 glm models. One is reduced model. The other is full model.

```
> res.lkh=lkhrWrapper(
+   es=es.q,
+   formulaReduced = xi~as.factor(memSubj),
+   formulaFull = xi~as.factor(memSubj)+gender,
+   family=gaussian,
+   logit=FALSE,
+   pvalAdjMethod="fdr",
+   alpha = 0.05,
+   probeID.var = "probe",
+   gene.var = "gene",
+   chr.var = "chr",
+   applier=lapply,
+   verbose=TRUE
+ )
```

```
*****
```

```
Top 20 tests>>>
```

	probeIDs	geneSymbols	chr	Chisq	Df	pval	p.adj	pos
77	probe87	gene87	1	9.078788	1	0.002585913	0.2585913	77
95	probe105	gene105	1	5.535945	1	0.018629704	0.4503399	95

70	probe80	gene80	1	5.413218	1	0.019984838	0.4503399	70
41	probe51	gene51	1	5.142924	1	0.023341297	0.4503399	41
92	probe102	gene102	1	4.867929	1	0.027360310	0.4503399	92
15	probe25	gene25	1	4.707136	1	0.030037649	0.4503399	15
22	probe32	gene32	1	4.624209	1	0.031523793	0.4503399	22
72	probe82	gene82	1	4.118205	1	0.042424066	0.4794337	72
54	probe64	gene64	1	4.089554	1	0.043149037	0.4794337	54
90	probe100	gene100	1	3.809597	1	0.050959724	0.5095972	90
100	probe110	gene110	1	3.553968	1	0.059403229	0.5400294	100
6	probe16	gene16	1	2.740925	1	0.097808137	0.7784161	6
17	probe27	gene27	1	2.553449	1	0.110053739	0.7784161	17
48	probe58	gene58	1	2.503260	1	0.113610876	0.7784161	48
69	probe79	gene79	1	2.460220	1	0.116762420	0.7784161	69
38	probe48	gene48	1	2.176369	1	0.140144757	0.8152063	38
34	probe44	gene44	1	2.035661	1	0.153647333	0.8152063	34
58	probe68	gene68	1	2.018252	1	0.155417926	0.8152063	58
68	probe78	gene78	1	1.968644	1	0.160591920	0.8152063	68
81	probe91	gene91	1	1.924669	1	0.165342887	0.8152063	81

```
formulaReduced>>
```

```
xi ~ as.factor(memSubj)
```

```
formulaFull>>
```

```
xi ~ as.factor(memSubj) + gender
```

```
Number of tests>>> 100
```

```
Number of arrays>>> 35
```

```
Number of tests with pvalue<0.05>>> 9
```

```
Number of tests with FDR adjusted pvalue<0.05>>> 0
```

```
>
```

## 16 Session Info

Finally, we need to print out the session info so that later we can know which versions the packages are from.

```
> toLatex(sessionInfo())
```

- R version 3.2.2 (2015-08-14), x86\_64-pc-linux-gnu
- Locale: LC\_CTYPE=en\_US.UTF-8, LC\_NUMERIC=C, LC\_TIME=en\_US.UTF-8, LC\_COLLATE=C, LC\_MONETARY=en\_US.UTF-8, LC\_MESSAGES=en\_US.UTF-8, LC\_PAPER=en\_US.UTF-8, LC\_NAME=C, LC\_ADDRESS=C, LC\_TELEPHONE=C, LC\_MEASUREMENT=en\_US.UTF-8, LC\_IDENTIFICATION=C

- Base packages: base, datasets, grDevices, graphics, methods, parallel, stats, utils
- Other packages: Biobase 2.30.0, BiocGenerics 0.16.0, gplots 2.17.0, iCheck 1.0.0, lumi 2.22.0
- Loaded via a namespace (and not attached): AnnotationDbi 1.32.0, BiocInstaller 1.20.0, BiocParallel 1.4.0, Biostrings 2.38.0, DBI 0.3.1, GEOquery 2.36.0, GeneSelectMMD 2.14.0, GenomeInfoDb 1.6.0, GenomicAlignments 1.6.0, GenomicFeatures 1.22.0, GenomicRanges 1.22.0, IRanges 2.4.0, KernSmooth 2.23-15, MASS 7.3-44, Matrix 1.2-2, RColorBrewer 1.1-2, RCurl 1.95-4.7, RSQLite 1.0.0, Rcpp 0.12.1, Rsamtools 1.22.0, S4Vectors 0.8.0, SummarizedExperiment 1.0.0, XML 3.98-1.3, XVector 0.10.0, affy 1.48.0, affyio 1.40.0, annotate 1.48.0, base64 1.1, beanplot 1.2, biomaRt 2.26.0, bitops 1.0-6, bumpHunter 1.10.0, caTools 1.17.1, codetools 0.2-14, colorspace 1.2-6, digest 0.6.8, doRNG 1.6, ellipse 0.3-8, foreach 1.4.3, futile.logger 1.4.1, futile.options 1.0.0, gdata 2.17.0, genefilter 1.52.0, ggplot2 1.0.1, grid 3.2.2, gtable 0.1.2, gtools 3.5.0, igraph 1.0.1, illuminaio 0.12.0, iterators 1.0.8, lambda.r 1.1.7, lattice 0.20-33, limma 3.26.0, lmtree 0.9-34, locfit 1.5-9.1, magrittr 1.5, matrixStats 0.14.2, mclust 5.0.2, methylumi 2.16.0, mgcv 1.8-7, minfi 1.16.0, mixOmics 5.1.2, multtest 2.26.0, munsell 0.4.2, nleqslv 2.9, nlme 3.1-122, nor1mix 1.2-1, pheatmap 1.0.7, pkgmaker 0.22, plyr 1.8.3, preprocessCore 1.32.0, proto 0.3-10, quadprog 1.5-5, randomForest 4.6-12, registry 0.3, reshape 0.8.5, reshape2 1.4.1, rgl 0.95.1367, rngtools 1.2.4, rtracklayer 1.30.0, scales 0.3.0, scatterplot3d 0.3-36, siggenes 1.44.0, splines 3.2.2, stats4 3.2.2, stringi 0.5-5, stringr 1.0.0, survival 2.38-3, tools 3.2.2, vsn 3.38.0, xtable 1.7-4, zlibbioc 1.16.0, zoo 1.7-12